

TO: PURCHASING INSTALLERS
ENGINEERING

No. 94-14

A. BRAVO THREE TRIM "IN" LIMIT BLOCKS

Models

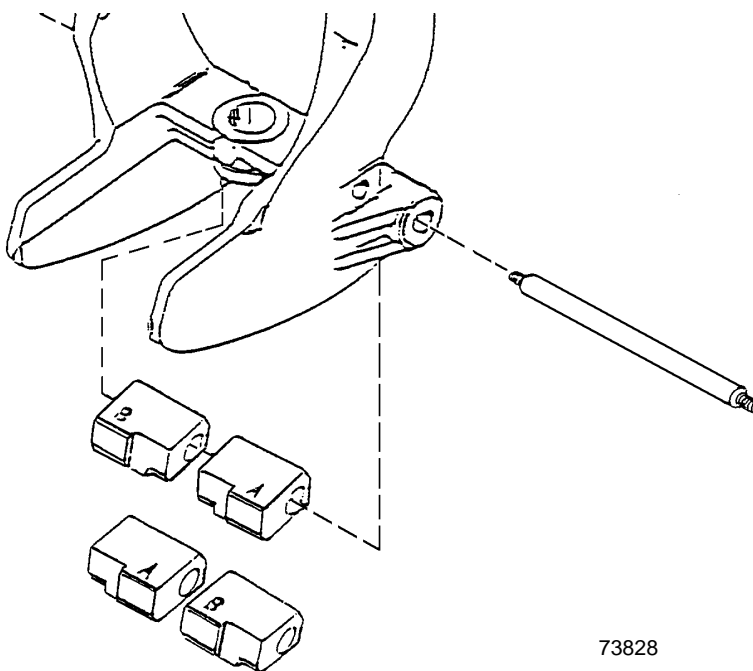
ALL BRAVO THREE TRANSOMS

Change

All Bravo Three Transom Assemblies Manufactured as of December 1st 1994 will already have the **Trim "In" Limit** spacer blocks installed at the 3/4" dimension as a standard setting. If a particular boat requires the 1" dimension or removal of the blocks, you will have to make the change by following either the Installation Manual or the Instruction Sheet that comes with the transom assembly.

⚠ WARNING

It is recommended that only qualified personal remove or adjust the trim "In" limit blocks. Boat must be water tested after removing or adjusting the trim "In" limit blocks to ensure that the modified trim "In" range does not cause the boat to exhibit an undesirable boat handling characteristic if the drive unit is trimmed "In" at higher speeds. Increased trim "In" range may cause handling problems on some boats which could result in personal injury.



73828